

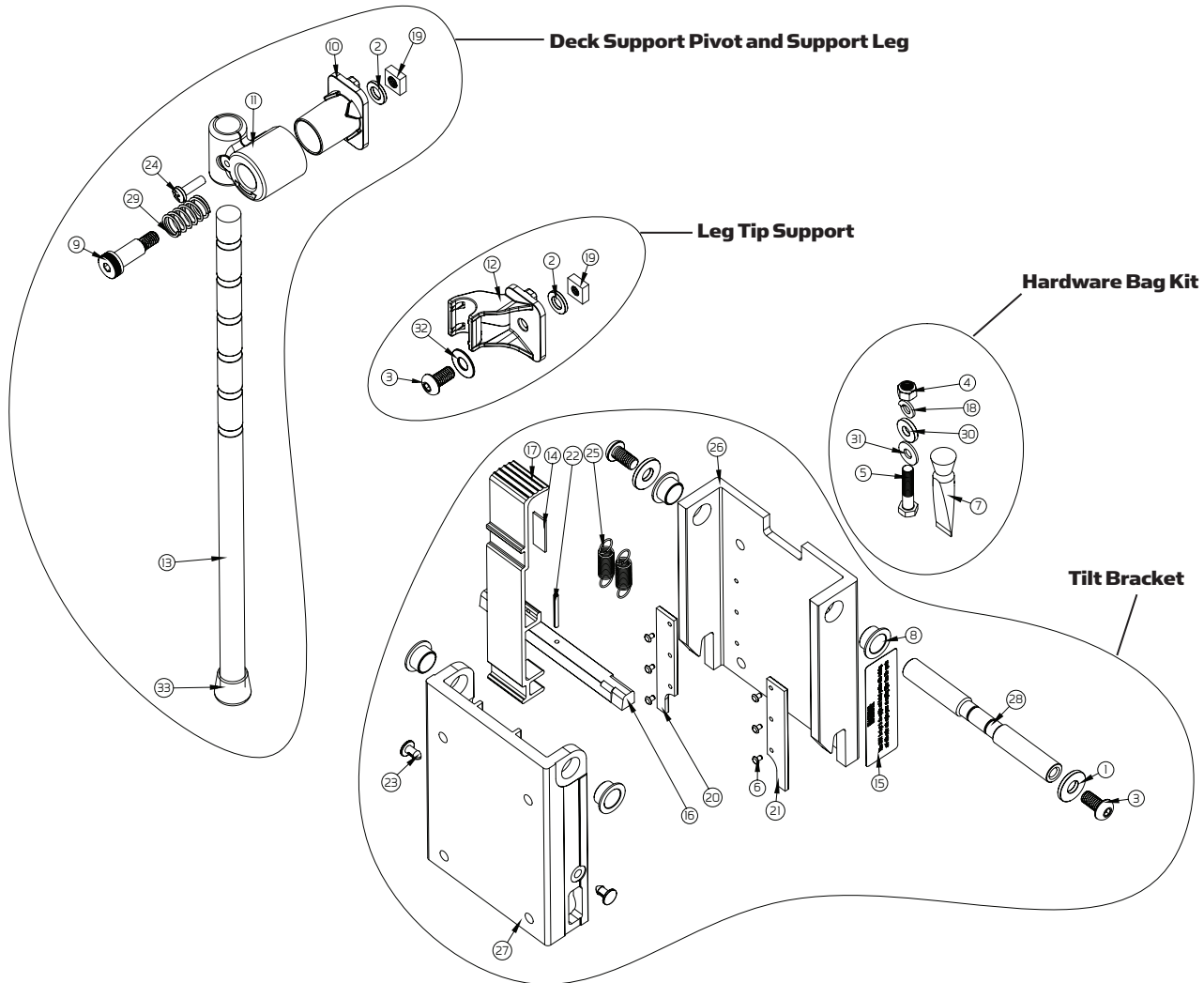
PARTS DIAGRAM

TALON TILT BRACKET

FOR 8', 10' AND 12' TALON MODELS

This page provides Minn Kota® WEEE compliance disassembly instructions. For more information about where you should dispose of your waste equipment for recycling and recovery and/or your European Union member state requirements, please contact your dealer or distributor from which your product was purchased.

Tools required, but not limited to: flat head screw driver, Phillips screw driver, socket set, pliers, wire cutters.



ITEM	QTY	PART NUMBER	DESCRIPTION
1	2	2371759	3/8 HD FENDER WASHER, SS
2	2	2371758	3/8 HD FLAT WASHER, SS
3	3	2383443	3/8-16 X .75" BHCS, SS
4	8	2223100	NUT, 5/16-18 NYLOCK, SS
5	8	2373521	5/16-18 X 1 1/2 HHCS
6	6	2378601	POP RIVET, 1/8", SS
7	1	2378608	ANTI SEIZE TUBE, 4CC
8	4	2370007	BEARING-SLEEVE,.625 X .375
9	1	2373531	BOLT-SHOULDER, STABILIZER
10	1	2372355	CRUTCH, INNER PIVOT
11	1	2372346	CRUTCH, OUTER PIVOT MACHINED
12	1	2372360	CRUTCH, SUPPORT
13	1	2992341	CRUTCH, TILT BRACKET ASSEMBLY
14	1	2375417	INSULATOR, TILT BRACKET
15	1	2375769	LABEL, WARNING, TALON TILT BRACKET
16	1	2372671	LATCH PIN, WEDGED,TALON TILT BRACKET
17	1	2377218	LEVER, TILT MACHINED
18	8	2371756	LOCK WASHER, 5/16" - SS

ITEM	QTY	PART NUMBER	DESCRIPTION
19	2	2373131	NUT, SQUARE 3/8-16, SS
20	1	2375119	PAD-WEAR, TALON TILT BRKT LEFT
21	1	2375114	PAD-WEAR, TALON TILT BRKT RIGHT
22	1	2372654	PIN, SPRING - 1/8" X 1 1/4 SS
23	2	2376730	PLUG-SPACER,TALON TILT BRK
24	1	2073408	SCREW-1/4-20 X 7/8 PPH 5/5
25	2	2372744	SPRING, LATCH, TILT BRACKET
26	1	2371941	TILT BASE, MACHINED
27	1	2370237	TILT COVER, MACHINED
28	1	2372667	TILT PIVOT PIN
29	1	2372747	SPRING, TALON STABILIZER
30	8	2371746	WASHER .75 X .3125, SS
31	8	2261722	WASHER-FLAT 5/16 S/S
32	1	2091701	WASHER, PROP
33	1	2265100	BUMPER
■		2770237	TILT BRACKET ASSEMBLY W/ HARDWARE KIT
■		2994910	HARDWARE KIT
■		2992345	DECK SUPPORT PIVOT & LEG W/ LEG TIP SUPPORT